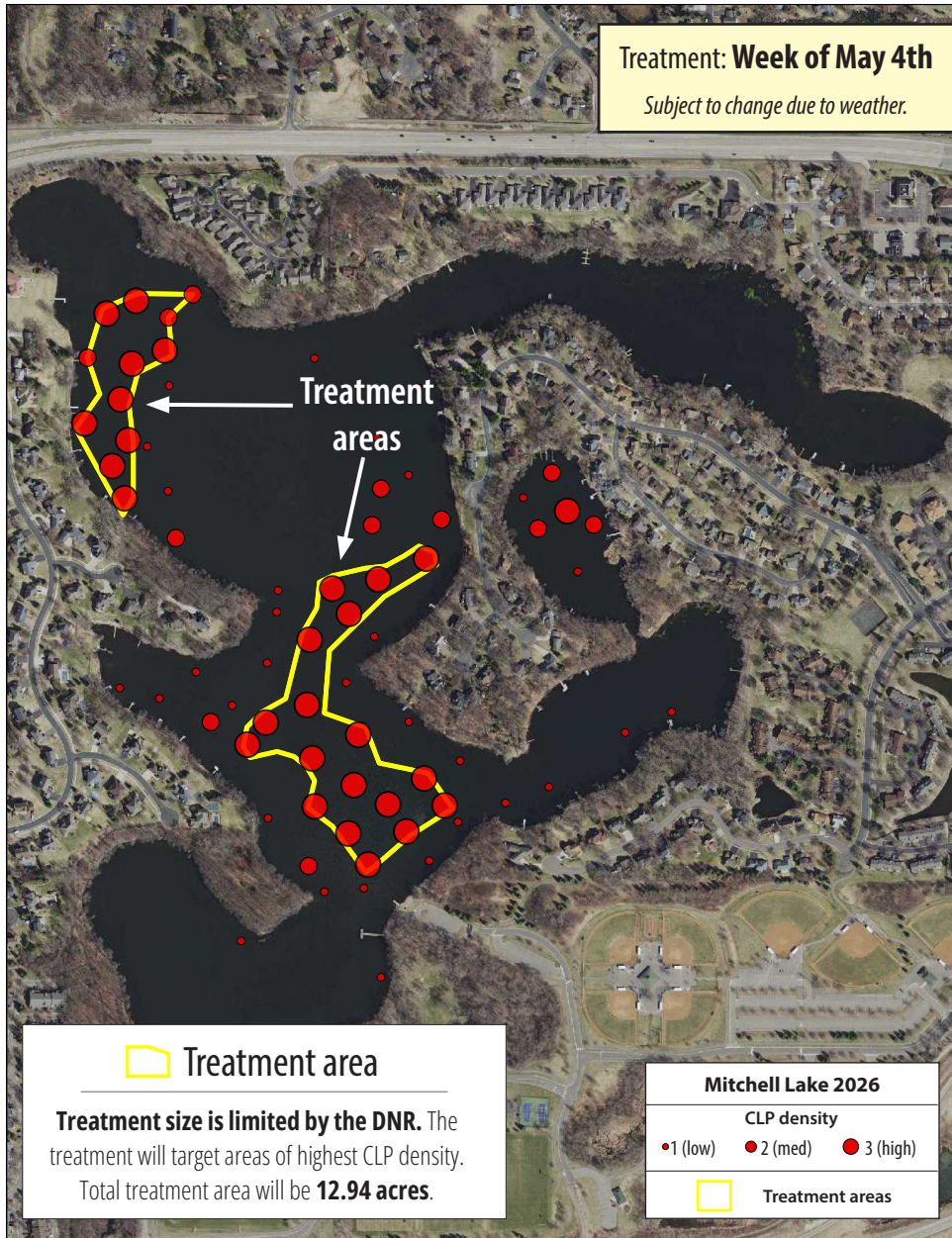


Mitchell Lake 2026 Herbicide Treatment



RPBCWD received a permit from the Minnesota DNR to control Curly-leaf Pondweed (CLP), an invasive aquatic plant growing in the lake.

The treatment will target areas on the lake with the highest CLP density. Treatment areas are outlined in yellow on the map.

Water Use Restrictions

After a Flumioxazin treatment, the DNR recommends **not using the water** for these activities for these number of days:



Swimming
No restriction



Drinking
3 days



Irrigation
7 days

RPBCWD has hired a contractor to apply an aquatic herbicide to control Curly-leaf Pondweed in the lake. *The treatment will occur at NO COST to residents.*

What: Herbicide treatment (Endothall)

Where: Within designated area(s) on lake (*see map*)

Why: To control Curlyleaf Pondweed, an invasive aquatic plant

When: **Week of May 4th** (subject to change due to weather)

Want treatment updates? Visit:

rpbcwd.org/AIS-control



View lake treatment status updates on the webpage.



Sign up for lake notification emails using webpage form.