

Red Rock Lake

Located in Eden Prairie, Red Rock Lake is a part of the Purgatory Creek chain of lakes. During high water events it outflows through an overflow pipe to Staring Lake.

From June to September every year, District staff visit the lake every two weeks to collect water samples and take readings. Samples are sent to a laboratory to be tested for nutrients and other compounds. Staff also measure water clarity by lowering a Secchi disk into the water and measuring how deep it goes before it is no longer visible. The data indicates the lake's health based on standards set by the Minnesota Pollution Control Agency (MPCA).

Red Rock Lake is classified as a "Shallow Lake" by the MPCA. To be considered healthy, the lake must meet standards set for shallow lakes. This includes low average phosphorus and chlorophyll-a levels and average water clarity of 1.0 meter (3.3 feet) or greater.

Red Rock Lake Water Quality Snapshot

Parameter	Shallow lake standard	2024 average	Note
Total Phosphorus	Less than 0.06 mg/L	0.082 mg/L	After meeting the standard in 2023, the levels increased in 2024 to well above the standard. The rise was likely due to large early spring rains which caused flushing of nutrients and sediments into the lake.
Chlorophyll-a	Less than 20 µg/L	75.2 µg/L	Chlorophyll-a levels increased in 2024. The lake has not met the standard for the last seven years.
Water Clarity	Greater than 1.0 meters	0.9 meters	The lake did not meet the standard in 2024 but has met the standard 8 out of the last 10 years.

Water quality trends shown on back of page.



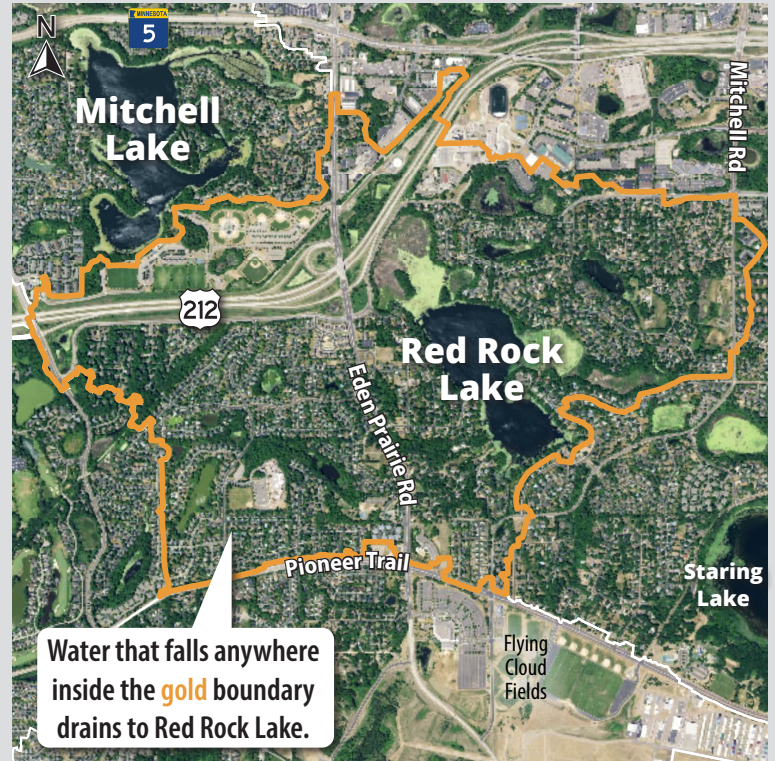
Plant update: In 2024, the City of Eden Prairie conducted a point intercept survey to evaluate plant diversity and density. In spring of 2024, RPBCWD treated 8.8 acres to control invasive Curly-leaf Pondweed.

Lake & watershed characteristics

Size	121 acres
Average depth	4.7 feet
Max depth	19 feet
MPCA lake classification	Shallow lake
Watershed size	1,286 acres
Impervious surface	25% of watershed
Impaired Waters listing	Mercury
Common fish	Bluegill, Northern Pike, Pumpkinseed, Black Crappie, Largemouth Bass
Invasive species	Curly-leaf Pondweed

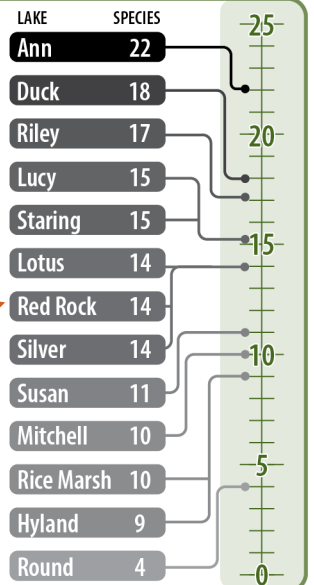


Watershed Boundary



Native Aquatic Plant Diversity

How does **Red Rock Lake** compare to **other lakes** in the District in **number of native plant species?**



Red Rock Lake Water Quality by the Numbers 2024

The graphs below show water quality trends over time with the red line representing the MPCA standard for shallow lakes. For the last few years, the City of Eden Prairie has collected water quality data for Red Rock Lake.

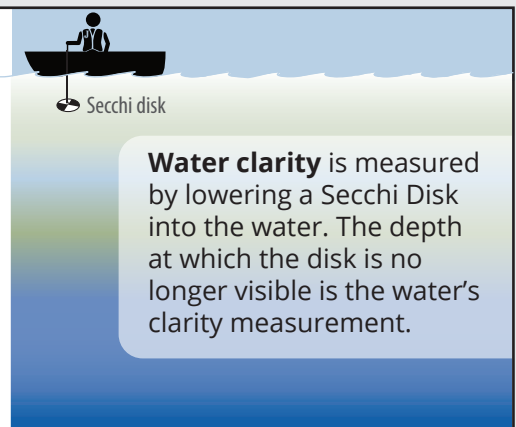
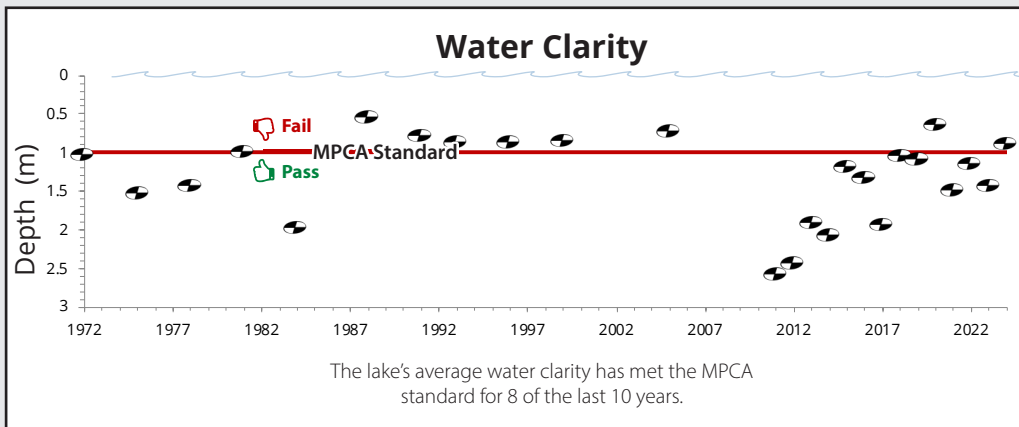
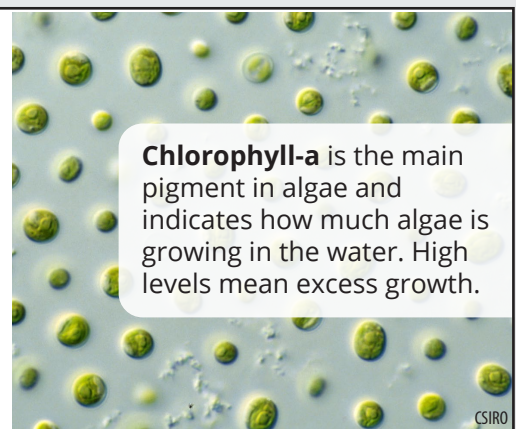
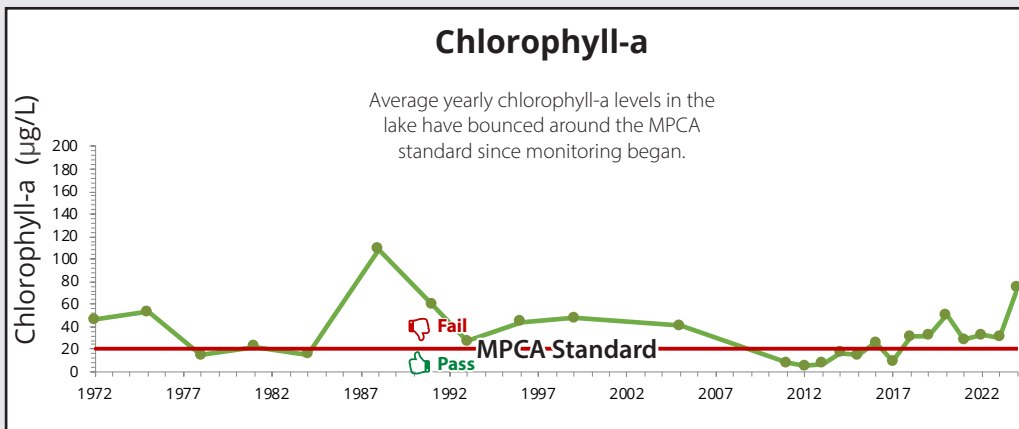
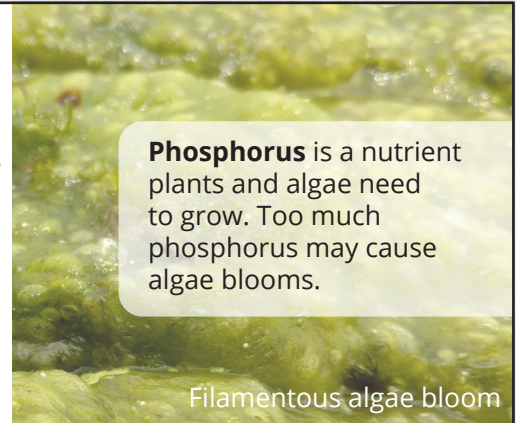
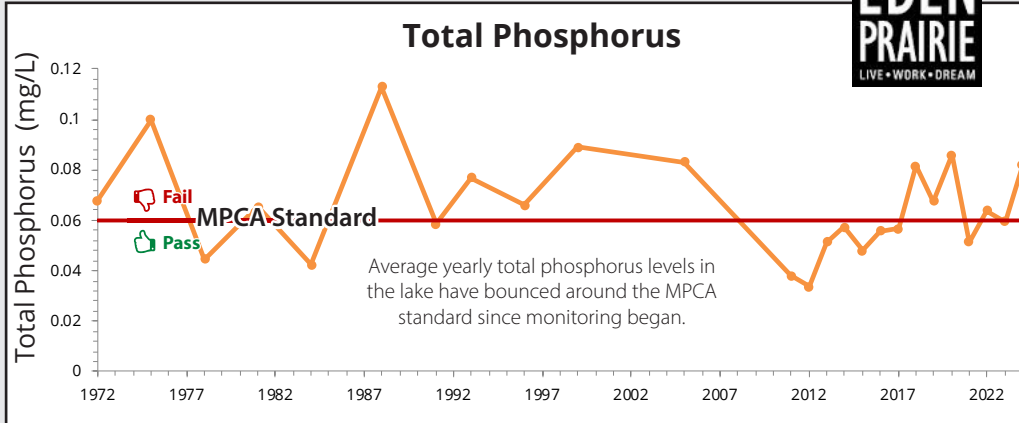


Water Quality Report Card

rpbpcwd.org/grades

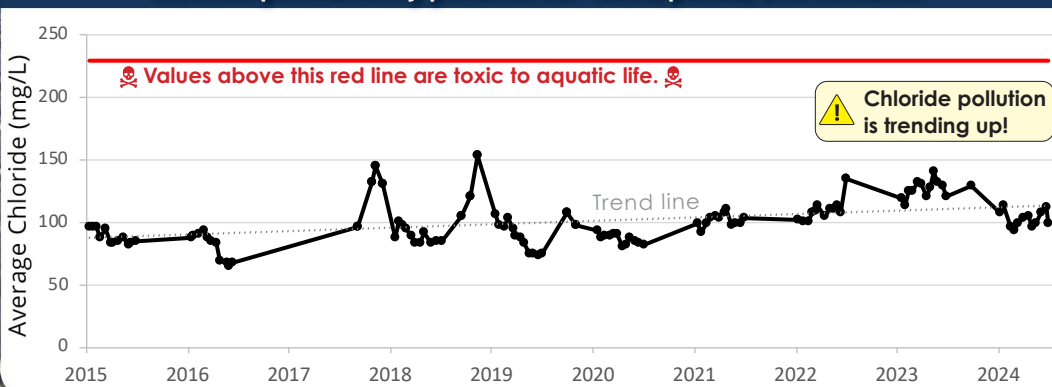


Trends Over Time: 1972-present



Chloride: A Growing Concern

Chloride permanently pollutes our lakes, ponds, and streams!



What can I use instead of winter de-icers?

All affordable & effective residential de-icing products contain chloride, even those labeled as "eco-friendly" or "pet safe."

Focus instead on reducing build up of ice on your property:

- Shovel early & often
- Prevent ice formation, avoid driving or walking on snow
- Pile snow where it won't melt & refreeze on walkways

ONE TEASPOON of SALT POLLUTES 5 GALLONS of WATER FOREVER

Learn more rpbpcwd.org/salt