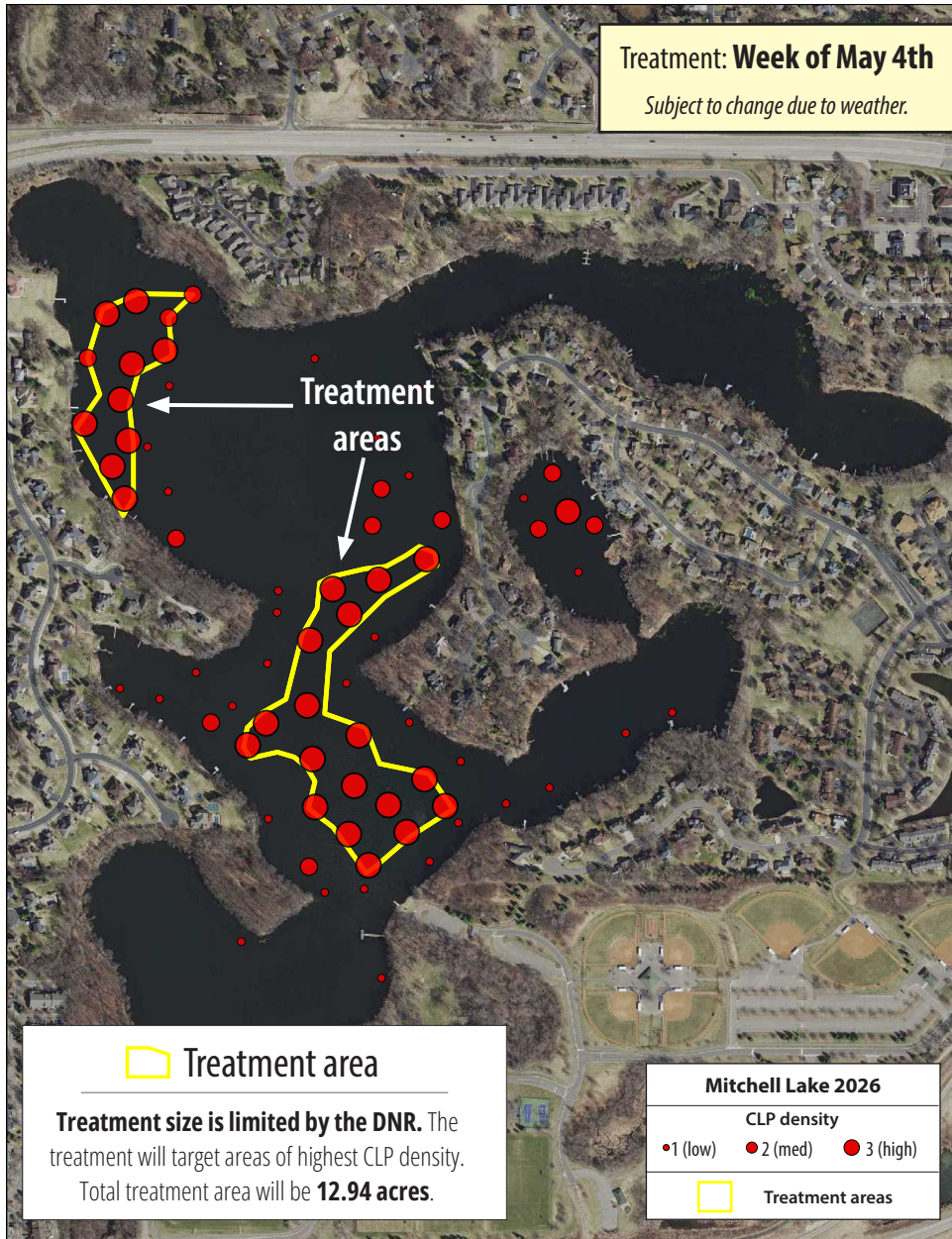


# Mitchell Lake 2026 Herbicide Treatment



RPBCWD received a permit from the Minnesota DNR to control Curly-leaf Pondweed (CLP), an invasive aquatic plant growing in the lake.

The treatment will target areas on the lake with the highest CLP density. Treatment areas are outlined in yellow on the map.

## Water Use Restrictions

After an Endothall treatment, the DNR recommends **not using the water** for these activities for these number of days:



**Swimming**  
No restriction



**Drinking**  
3 days



**Irrigation**  
7 days

**RPBCWD** has hired a contractor to apply an aquatic herbicide to control Curly-leaf Pondweed in the lake. *The treatment will occur at NO COST to residents.*

**What:** Herbicide treatment (Endothall)

**Where:** Within designated area(s) on lake (*see map*)

**Why:** To control Curlyleaf Pondweed, an invasive aquatic plant

**When:** **Week of May 4<sup>th</sup>** (subject to change due to weather)

**Want treatment updates? Visit:**

**[rpbcwd.org/AIS-control](http://rpbcwd.org/AIS-control)**



**View** lake treatment status updates on the webpage.



**Sign up** for lake notification emails using webpage form.