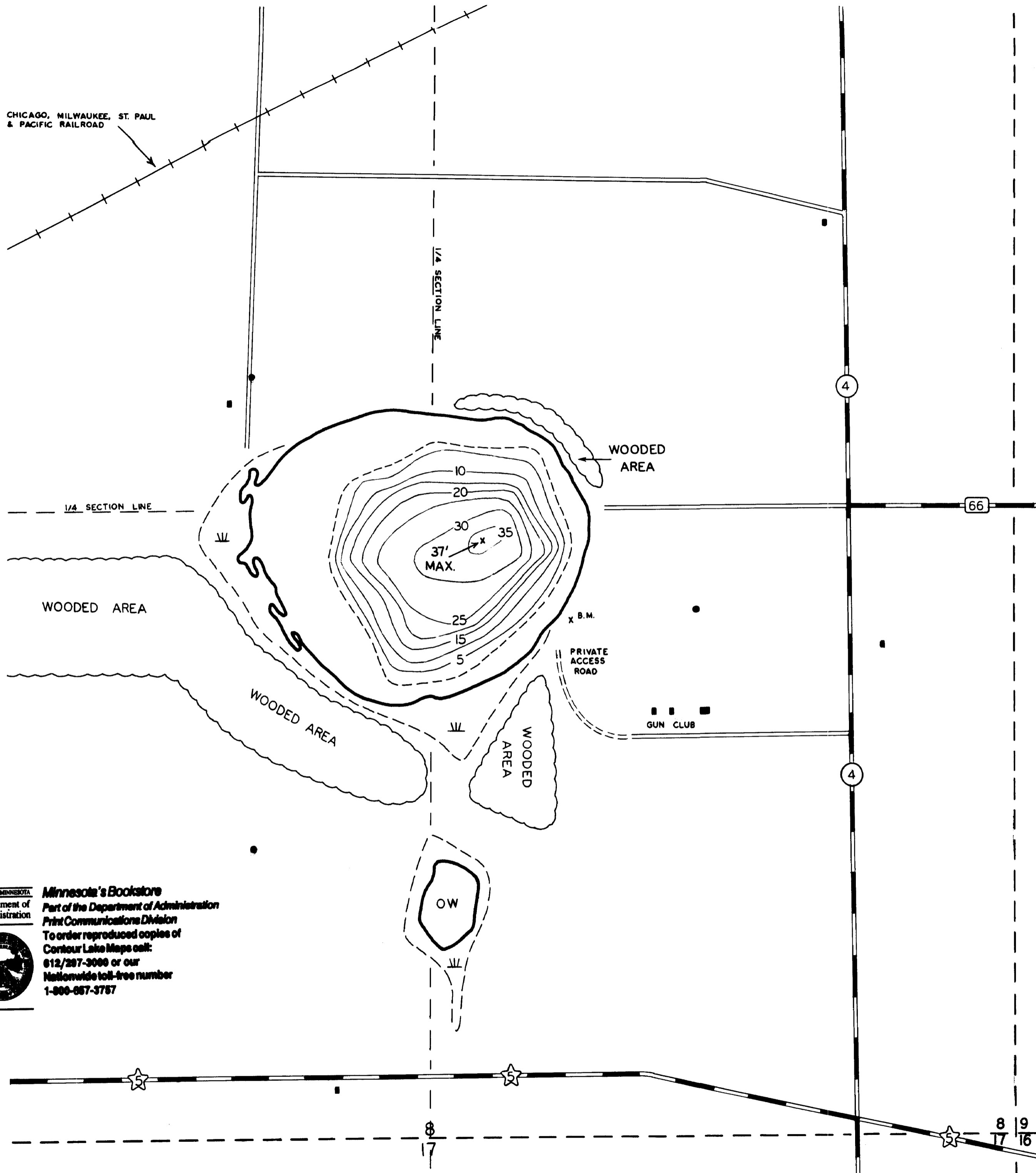


CHICAGO, MILWAUKEE, ST. PAUL
& PACIFIC RAILROAD



© COPYRIGHT 1993
STATE OF MINNESOTA
DEPARTMENT OF NATURAL RESOURCES
DIVISION OF FISH AND WILDLIFE

LEGEND

- STATE HIGHWAY SYSTEM
- STATE AID ROAD
- COUNTY ROAD
- BITUMINOUS ROAD
- MAINTAINED DIRT ROAD
- PRIMITIVE DIRT ROAD
- MARSH AREA

PLANIMETERED AREA = 33.2 ACRES
LITTORAL AREA = 23.2 ACRES

B. M. = TOP OF GREEN STEEL STAKE ON FENCE-
LINE, 15' FROM WATER'S EDGE, SOUTHEAST
SHORE OF LAKE.

W. S. ELEV. = 1.5' BELOW B.M.

OUTLINE DRAWN FROM 1953 HIGHWAY DEPT.
AERIAL PHOTOS - 5M-85

0 165 330 660

SCALE IN FEET

STATE OF MINNESOTA
Department of
Administration

Minnesota's Bookstore
Part of the Department of Administration
Print Communications Division
To order reproduced copies of
Contour Lake Maps call:
612/297-3000 or our
Nationwide toll-free number
1-800-657-3757



© State of Minnesota

STATE OF MINNESOTA
DEPARTMENT OF CONSERVATION

DIVISION OF GAME AND FISH
RESEARCH AND PLANNING SECTION

ROUND LAKE 27-71
HENNEPIN COUNTY

T. 116 N. R. 22 W. S. 8

FIELDWORK	R. W. B.	DRAWN BY	R. W. B.	PROJ. IDENT. NO.
DATE	10-9-82	DATE	12-26-82	FW-1R-7

© State of Minnesota 1964

C-1345