

Staring Lake

Staring Lake is located in Eden Prairie, west of Flying Cloud Drive and north of Pioneer Trail. Staring has a public boat ramp and a fishing pier. The Eden Prairie Outdoor Center is also located on its shores, off of Staring Lake Parkway.

From June to September every year, District staff visit the lake every two weeks to collect water samples and take readings. Samples are sent to a laboratory to be tested for nutrients and other compounds. Staff also measure water clarity by lowering a Secchi disk into the water and measuring how deep it goes before it is no longer visible. The data indicates the lake's health based on standards set by the Minnesota Pollution Control Agency (MPCA).

Staring Lake is classified as a "Shallow Lake" by the MPCA. To be considered healthy, the lake must meet standards set for shallow lakes. This includes low average phosphorus and chlorophyll-a levels and average water clarity of 1.0 meter (3.3 feet) or greater.

Staring Lake Water Quality Snapshot

Parameter	Shallow lake standard	2025 average	Note
Total Phosphorus	Less than 0.06 mg/L	0.063 mg/L	Levels have decreased since carp control began in 2011. In 2025, the lake just failed to meet the standard.
Chlorophyll-a	Less than 20 µg/L	41.7 µg/L	No significant trend. The lake failed to meet the standard but chlorophyll-a levels remained steady from previous year.
Water Clarity	Greater than 1.0 meters	0.8 meters	The lake has failed to meet the standard the last three years.

Water quality trends shown on back of page.



Carp update: A winterkill in 2022-23 of bluegill and other fish that prey on invasive carp eggs and young resulted in carp recruitment in 2023. No recruitment was observed in 2024 or 2025, but staff will continue to monitor and control carp in the lake.



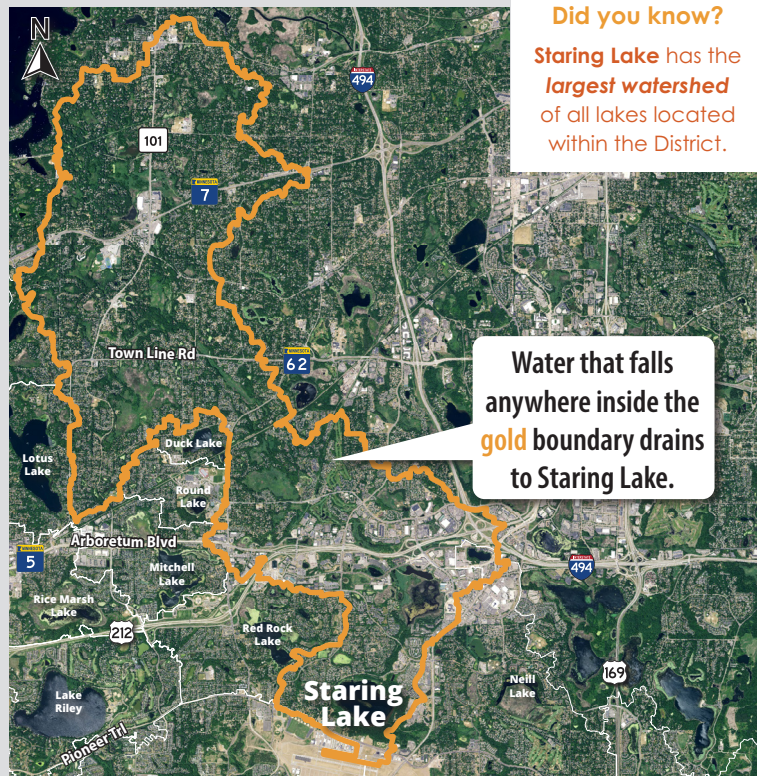
Plant update: Treatments were used to control invasive Eurasian Watermilfoil in 2022 and 2025, and Curly-leaf Pondweed in early 2024. In 2025, a survey showed presence of 6 native species, with Eurasian Watermilfoil and Curly-leaf Pondweed at low abundance.

Lake & watershed characteristics

Lake size	166 acres
Average lake depth	7 feet
Maximum lake depth	16 feet
MPCA lake classification	Shallow lake
Watershed size	10,158 acres
Impervious surface	21% of watershed
Impaired Waters listing	Mercury & nutrients
Common fish	Bluegill, Black Crappie, Black Bullhead
Invasive species	Curly-leaf Pondweed, Eurasian Watermilfoil, Brittle Naiad, Common Carp



Watershed Boundary



Native Aquatic Plant Diversity

How does Staring Lake compare to other lakes in the District in number of native plant species?



Staring Lake Water Quality by the Numbers

2025

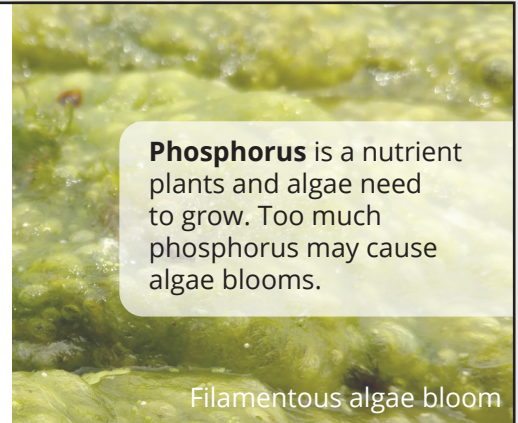
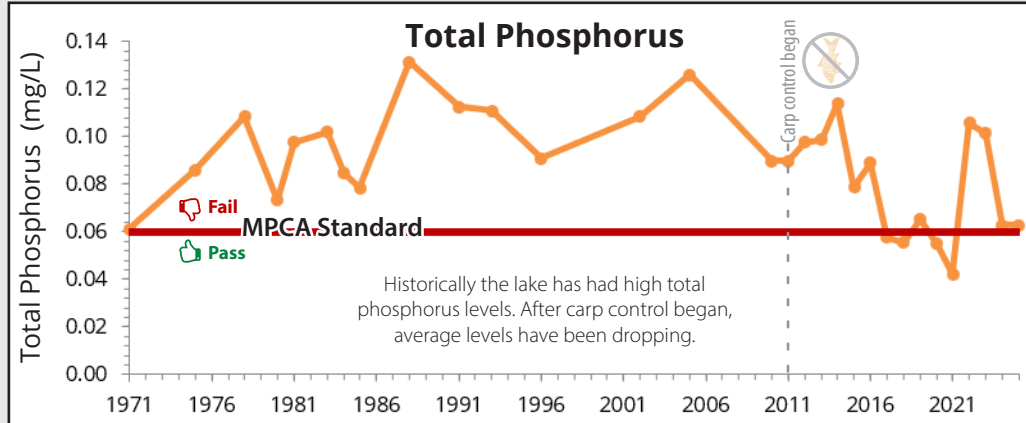
Water Quality
Report Card

rpbcwd.org/grades



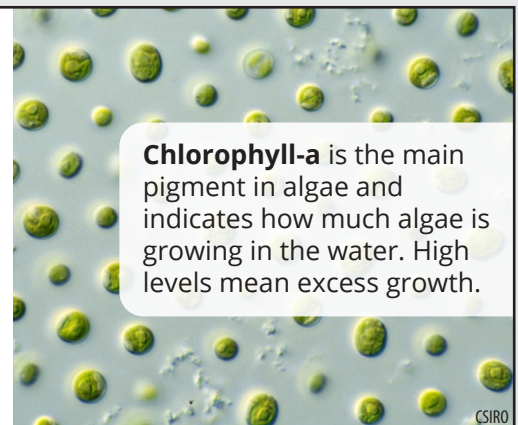
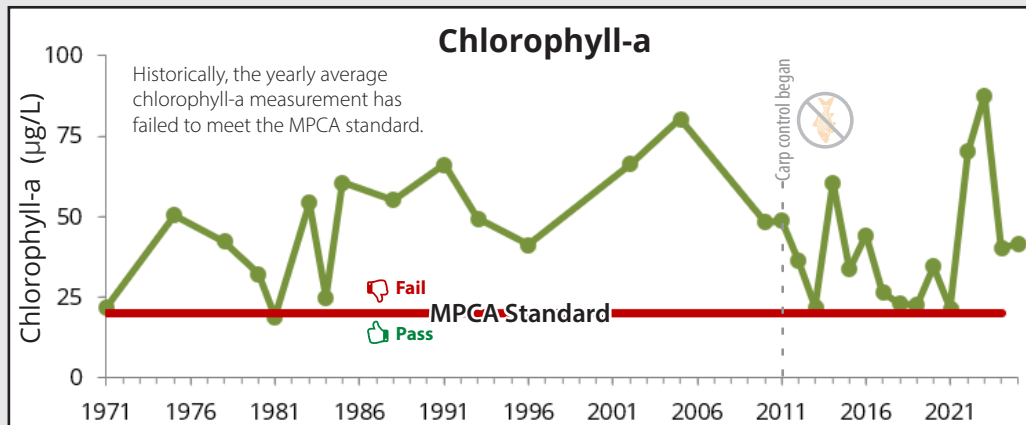
The graphs below show water quality trends over time with the red line representing the MPCA standard for shallow lakes. Over the last decade, **Staring Lake** has failed to consistently meet clean water standards set by the MPCA.

Trends Over Time: 1972-present



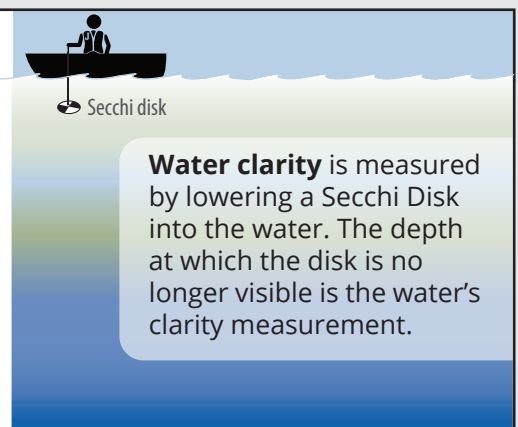
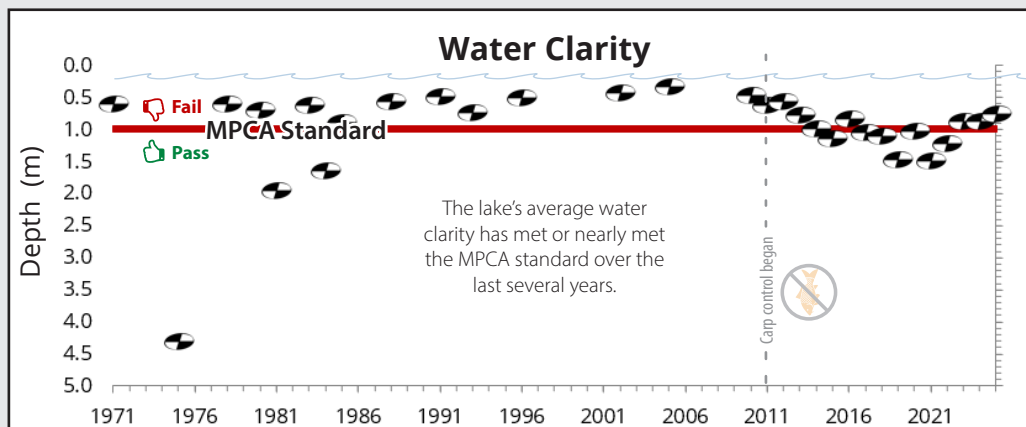
Phosphorus is a nutrient plants and algae need to grow. Too much phosphorus may cause algae blooms.

Filamentous algae bloom



Chlorophyll-a is the main pigment in algae and indicates how much algae is growing in the water. High levels mean excess growth.

CSIRO

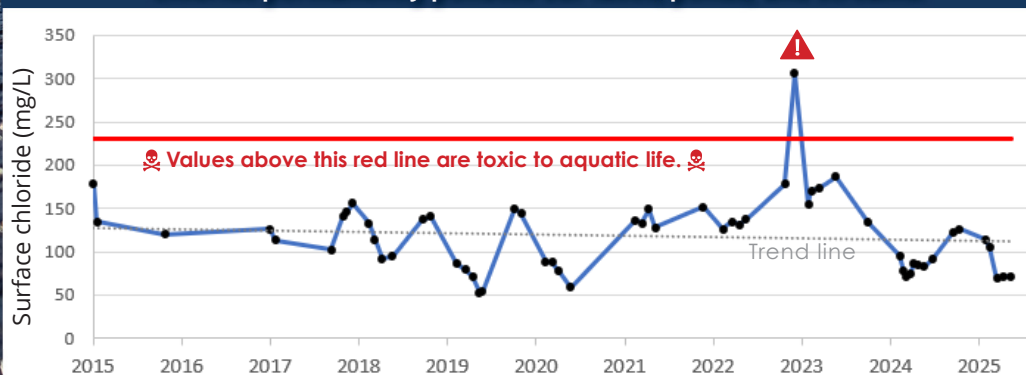


Secchi disk

Water clarity is measured by lowering a Secchi Disk into the water. The depth at which the disk is no longer visible is the water's clarity measurement.

Chloride: A Growing Concern

Chloride permanently pollutes our lakes, ponds, and streams!



What can I use instead of winter de-icers?

All affordable & effective residential de-icing products contain chloride, even those labeled as "eco-friendly" or "pet safe."

Focus instead on reducing build up of ice on your property:

- ❄️ Shovel early & often
- ❄️ Prevent ice formation, avoid driving or walking on snow
- ❄️ Pile snow where it won't melt & refreeze on walkways

ONE TEASPOON of SALT POLLUTES 5 GALLONS of WATER FOREVER

Learn more rpbcwd.org/salt